



15, PORTMAN SQUARE  
MARYLEBONE, W1H  
£3,500 Per Month

T. +44 (0) 20 7935 0011  
E. [enquire@napierwatt.co.uk](mailto:enquire@napierwatt.co.uk)  
[WWW.NAPIERWATT.CO.UK](http://WWW.NAPIERWATT.CO.UK)

**NAPIER WATT**  
PROPERTY CONSULTANTS

## Description

Students will sadly not be considered for this property.

A luxury two bedroom fourth floor apartment is set to the rear of this sought after 24 hour portered block 15 Portman Square. The property has access to the world famous garden square, Portman Square and within minutes walk of Luxury department store Selfridges Oxford Street and the amazing shopping on Bond Street.

The property is now available and ready for immediate occupation, it is available fully furnished. The property has been finished in a contemporary style. Feature will include some wood floors, central sound system, luxury fitted kitchen, luxury bathroom with aquavision TV.

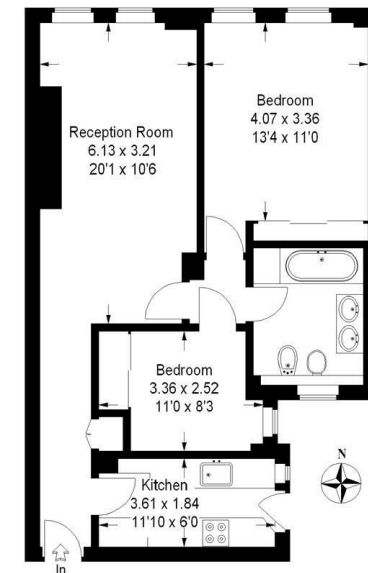
Students will sadly not be considered for this property.

Westminster Council Tax Band E



### 90, 15 Portman Square

Approximate Gross Internal Area :-  
65 sq m / 700 sq ft



Fourth Floor

This plan is for layout guidance only. Not drawn to scale unless stated.  
Windows & door openings are approximate.  
Whilst every care is taken in the preparation of this plan, please check all dimensions, shapes & compass bearings before making any decisions reliant upon them. (ID6322)

## TERMS

**For Clarification** we wish to inform prospective purchasers that we have prepared these sales particulars as a general guide. We have not carried out a survey, nor tested the services, appliances and specific fittings. Room sizes are approximate and rounded: they are taken between internal wall surfaces and therefore include cupboards/shelves, etc. Accordingly, they should not be relied upon for carpets and furnishings. Formal notice is given that all fixtures and fittings, carpeting, curtains/blinds and kitchen equipment, whether fitted or not, are deemed to be removable by the vendor unless specifically itemised within these sales particulars.

T. +44 (0) 20 7935 0011  
E. [enquire@napierwatt.co.uk](mailto:enquire@napierwatt.co.uk)  
[WWW.NAPIERWATT.CO.UK](http://WWW.NAPIERWATT.CO.UK)

**NAPIER WATT**  
PROPERTY CONSULTANTS